

Ultrasound Ultraprobe 10,000 Instructions

Compressor Valve Inspection

Rev. 1.0

3/2012 SAFETY: Wrist Strap to be Worn at ALL TIMES

▲ TQC □ Work ○ Verify

2-5 min

UE Systems Training

1

Needed: Ultraprobe 10,000 and CF card;
Stethoscope Module; Rubber Focusing Probe;
Headphones



2

Possible Accessories: Remote Magnetic Transducer;
Extension Rods for Stethoscope Module. The
Magnet Works very well for Compressors.



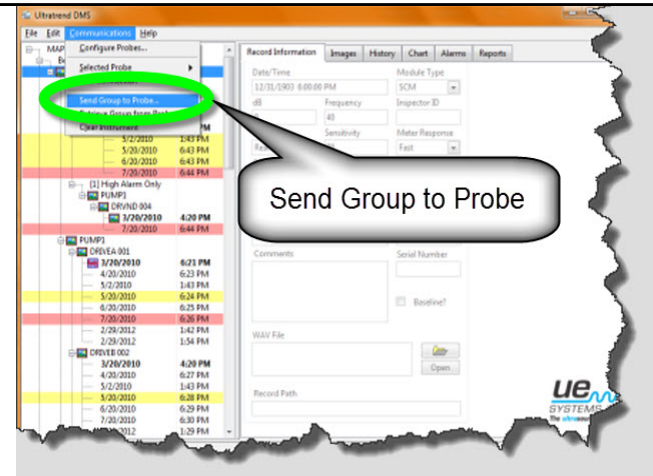
3

Move Cursor to Function Bar by Pushing
Sens.Knob 2X and Press Enter for Setup Menu



4

If Using a Route, move Route to Flash Card, then
load to Ultraprobe by using Data Transter. Refer to
Instructions "Loading Route."



Ultrasound Ultraprobe 10,000 Instructions

Compressor Valve Inspection

Rev. 1.0

3/2012 SAFETY: Wrist Strap to be Worn at ALL TIMES

 TQC  Work  Verify

2-5 min

UE Systems Training

5

If baselining the route, have Instrument Setup in Manual. If route is established and baselined, have Inst.Setup in Auto.

NOTE

Refer to **Visual Instructions**
for
General Setup
and
Loading Route to Ultraprobe
10,000

6

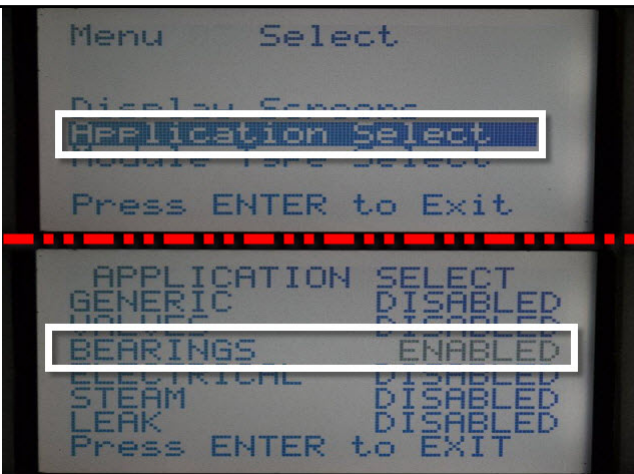
If you are PERFORMING the BASELINE Readings, proceed to NEXT INSTRUCTION, if not READ the Picture Below.

NOTE

If using setting of
Automatic and Route is Already
Baselined,
SKIP
to
Instruction # 14 and set the
Function Bar to "Store Record" or
"Record Wav."

7

Rotate for Application Select, Push Sens.Knob. Rotate to Bearings or Generic, push Sens.Knob (Enable Bearings). Press Enter to Exit.



Menu Select

Display Screen

Application Select

Module Type Select

Press ENTER to Exit

APPLICATION SELECT

GENERIC DISABLED

BEARINGS ENABLED

ELECTRICAL DISABLED

STEAM DISABLED

LEAK DISABLED

Press ENTER to EXIT

8

A clean memory is a must to keep files organized. It is Normal to Delete Records when changing apps.

****NOTE****

Make sure the Compact Flash Card is empty by deleting all the files on it, before starting or loading a new route.

The onboard built-in memory will be cleared once a New Route is loaded or by changing the Application

Ultrasound Ultraprobe 10,000 Instructions

Compressor Valve Inspection

Rev. 1.0

3/2012 SAFETY: Wrist Strap to be Worn at ALL TIMES

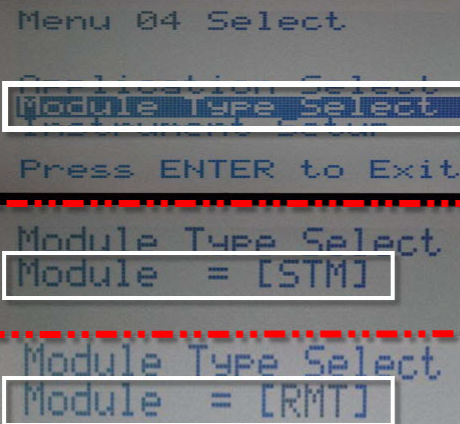
▲ TQC □ Work ○ Verify

2-5 min

UE Systems Training

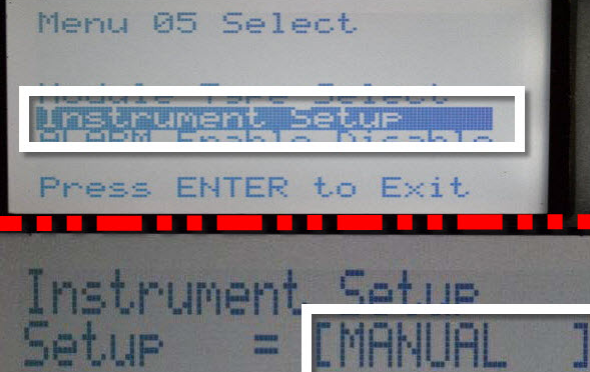
9

Rotate to Module Type Select, push Sens.Knob.
Rotate to Stethoscope (STM) or Remote Magnet (RMT); Push Sens to Select/Exit



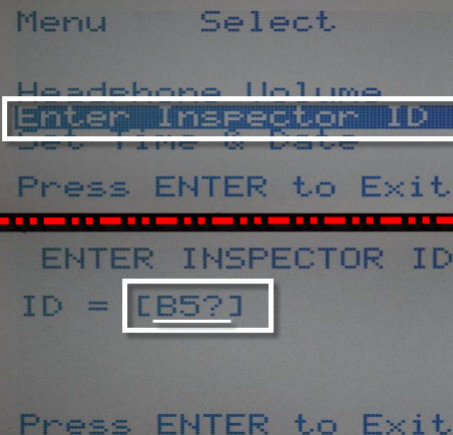
10

Rotate to Instrument Setup, Push Sens.Knob.
Rotate for "Manual", Push Sens.Knob to Select/Exit



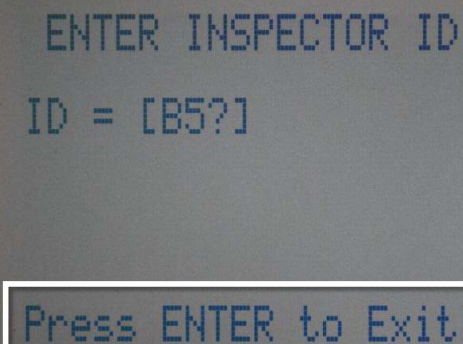
11

Rotate to Enter Inspector ID [under "More" in Setup Menu], push Sens.Knob. Enter 3 Alpha-Numeric Characters use Sens.Knob.



12

Press Enter 2X to Save/Exit and return to Main Display.



Ultrasound Ultraprobe 10,000 Instructions

Compressor Valve Inspection

Rev. 1.0

3/2012 SAFETY: Wrist Strap to be Worn at ALL TIMES

 TQC  Work  Verify

2-5 min

UE Systems Training

13

Push Sens.Knob 1X to move cursor to Frequency.
Rotate to 30 kHz (or Frequency Tune for better
sound clarity)



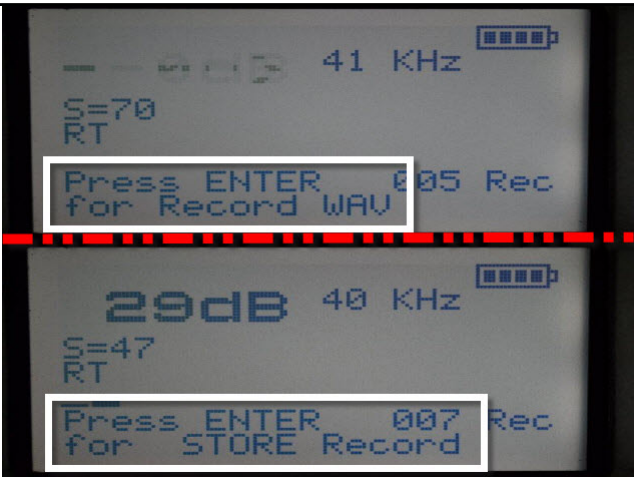
14

IF Route has been baselined and established refer
to NOTE. Note does not hold true for
troubleshooting WITHOUT having a route loaded.

Note
If a baseline route has already been
created and **ESTABLISHED**, and that
route has been loaded to the Ultraprobe
10,000 (in Automatic mode of Instrument
Setup),
there will be NO need to change the
Application, Module, Inspector ID, or
Frequency as this will happen
automatically.

15

Push Sens. 1X more [if cursor at S= push 2X]
moving Cursor to Function Bar. Rotate Sens until
Store Record or Record Wav in prep for readings.



16

Push Sens.Knob 1X more to return cursor to S=
(Operational Home Spot for Adjusting Sensitivity).



Ultrasound Ultraprobe 10,000 Instructions

Compressor Valve Inspection

Rev. 1.0

3/2012 SAFETY: Wrist Strap to be Worn at ALL TIMES

△ TQC □ Work ○ Verify

2-5 min

UE Systems Training

17

NOTE: Choose your test point.

NOTE

Prepare to take a Reading:
Place the cursor back to the Sensitivity
Position (S= ____)
and then choose your point and listen.
The Stethoscope module should rest on
the test point as close to a 90° angle to
test point as possible.

NEVER PLACE PRESSURE on the test
point!!!

18

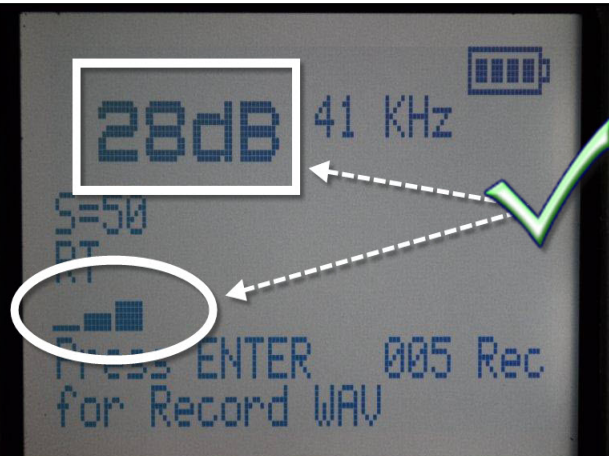
Listen for the "Snap at the end of every stroke. Or
compare and listen for Anomalies.

No Matter what Size of the
Compressor, choose the
Valve Head for the Test
Point. When **Comparing**
Valves, always compare the
INLET to INLET and then
the **OUTLET to**
OUTLET.



19

[Store Record: Adjust Sens. for dB] OR [Record
WAV: Adjust Sens (dB) AND Intensity Meter (2-4
Bars)]



20

Visual Instructions exist for Storing a Record or
Recording a Sound WAV.

Refer to **Visual Instruction**
for:

Storing a Record
or
Recording a Sound WAV

Ultrasound Ultraprobe 10,000 Instructions **Compressor Valve Inspection**

Rev. 1.0

3/2012 SAFETY: Wrist Strap to be Worn at ALL TIMES

 TQC  Work  Verify

2-5 min

UE Systems Training

21

Once Finished with Storing Record or Recording Wav, move to next test point. Unit Returns to Main Display advanced to next point.

WAVE
STORE
CONFIRMED

STORE
RECORD
CONFIRMED

22

ALWAYS WEAR the HEADPHONES.

NOTE

Even though you may adjust the Sensitivity and Intensity Meter for Storing Records and Record WAV, it is important to WEAR the HEADPHONES and listen.

So before adjusting for storage, adjust the Sensitivity for your EARS and LISTEN to the quality of bearing. Sound doesn't Lie.