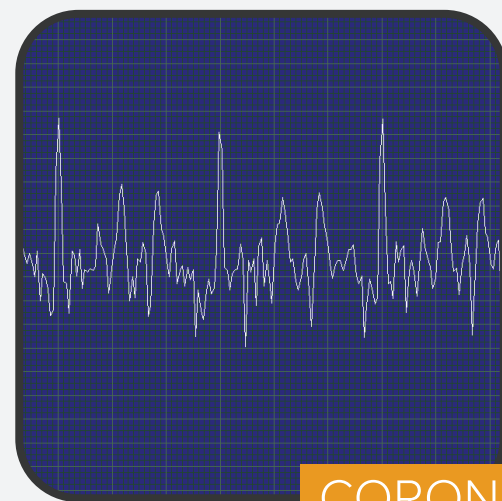


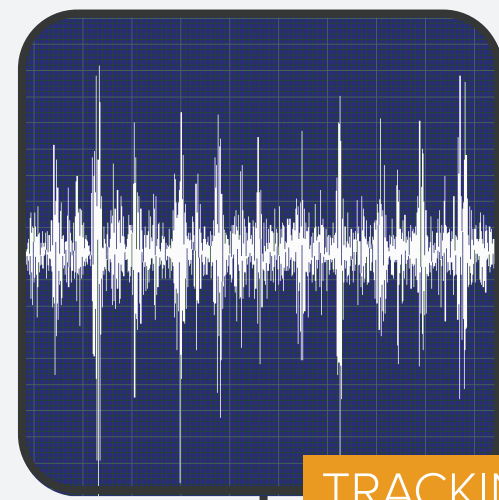
ELECTRICAL INSPECTION



Set instrument to 40 kHz for airborne electrical inspection



CORONA



TRACKING

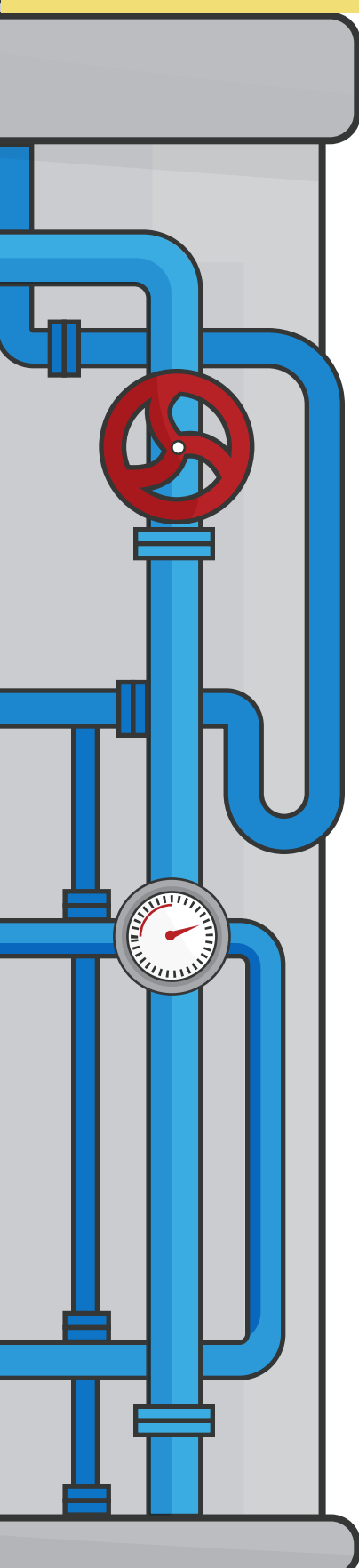


ARCING

Listen for problematic Corona, Tracking or Arcing

AIR & GAS LEAK DETECTION

Start scanning equipment from a distance—at 40 kHz and high sensitivity



If leak is heard, lower intensity while moving closer to pinpoint leak location



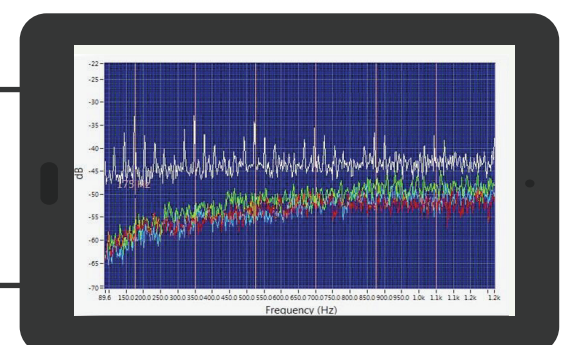
Record dB levels with the tip of the rubber focusing probe 15" away from leak for accurate reporting



MECHANICAL ANALYSIS

Recommended frequency setting is 30 kHz for standard bearings; 20-25 kHz for slow speed bearings

Overlay up to 4 FFTs at once to compare readings against baselines



8 dB above baseline = Lack of Lubrication



16 dB above baseline = Damaged



35 dB above baseline = Extreme Damage



Return to baseline dB levels indicates sufficient lubrication