

BEARING INSPECTION

ULTRAPROBE **15,000**



15,000 BEARING INSPECTION



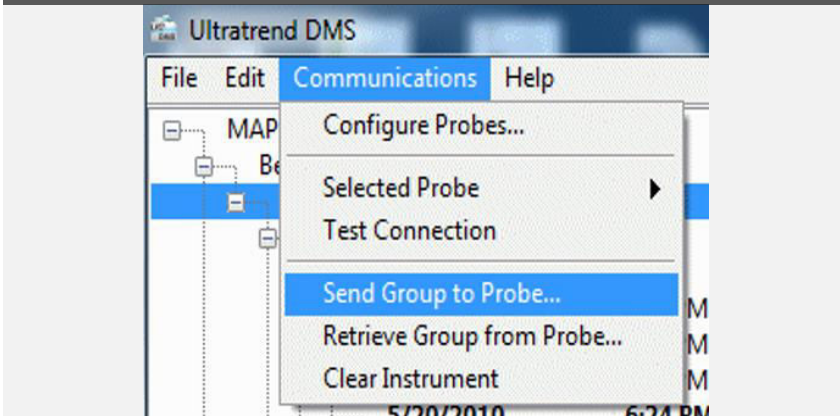
Needed: Ultraprobe 15000 and SD card; Stethoscope Module; Rubber Focusing Probe; Headphones



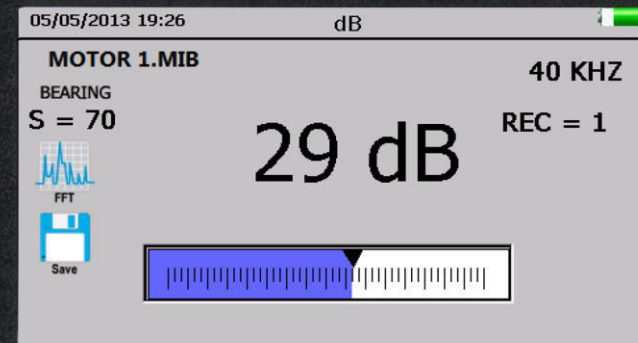
Change application to Bearing.



Load bearing route to Ultraprobe.
Refer to **Loading a Route to SD card** Instructions.



Tune frequency to 30 kHz.
NOTE: Frequency tuning may be required.

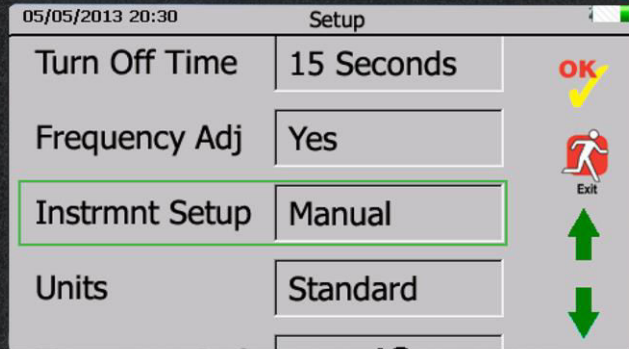


SAFETY: WRIST STRAP WORN ALL TIMES

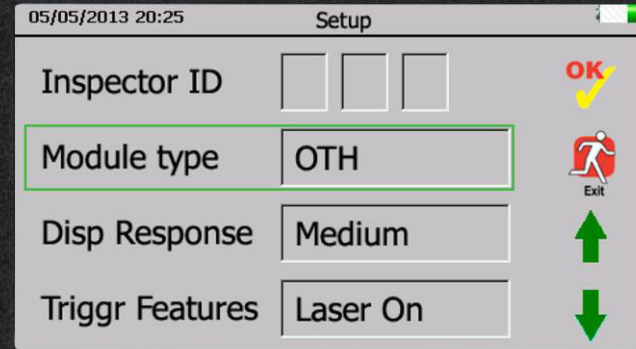
15,000 BEARING INSPECTION



Set Instrument to Manual when doing baselines and Auto for historical trending.



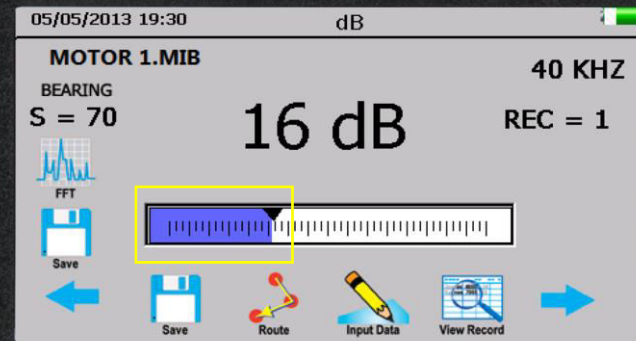
Select module type.



Choose Bearing or Motor Test Point.
Do not insert into rotating equipment.



Optimize sensitivity to 20-40% of scale.



SAFETY: WRIST STRAP WORN ALL TIMES

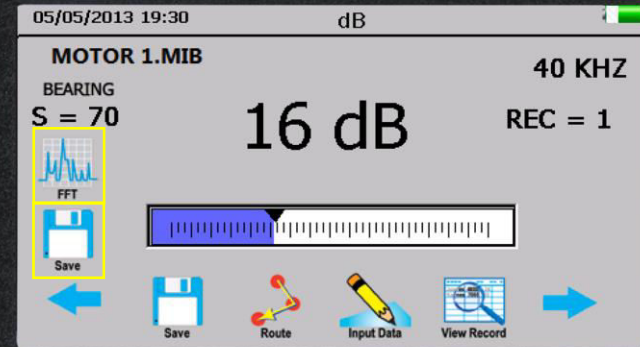
15,000 BEARING INSPECTION



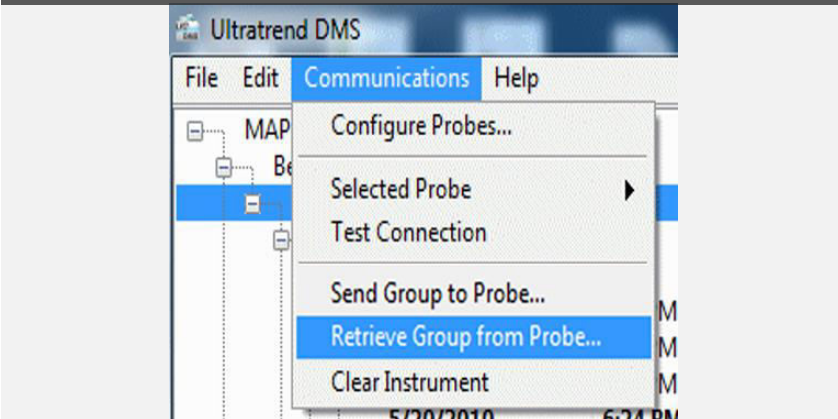
Listen to sound quality and compare baseline information.



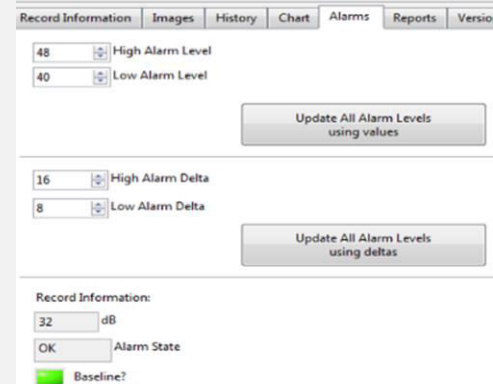
Save record or Record WAV file. Refer to **Store Record & Sound Recording** Instructions



Upload data into DMS software. Refer to **Downloading Route** instructions.



Set Alarm Levels and analyze data. (Ex. Low Alarm-8dB High Alarm-16dB)



SAFETY: WRIST STRAP WORN ALL TIMES