

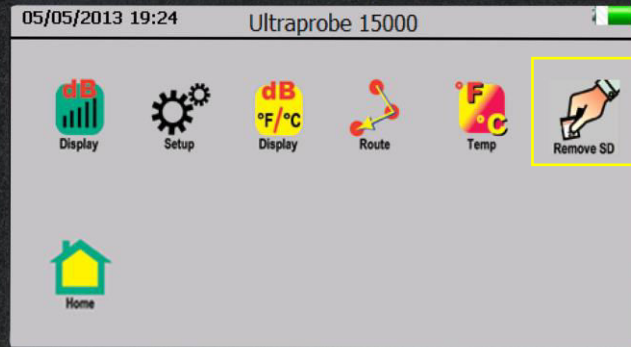
DOWNLOADING ROUTE TO PC

ULTRAPROBE **15,000**

15,000 **DOWNLOADING ROUTE TO PC**



Upon completion of data collection, select **Remove SD** from **Home Screen**.



Remove the SD Card by pushing in on the SD Card on the side of the Ultraprobe.



You can also remove the SD Card after turning the Ultraprobe off.



Remove the SD Card and insert it into the card reader to download data.

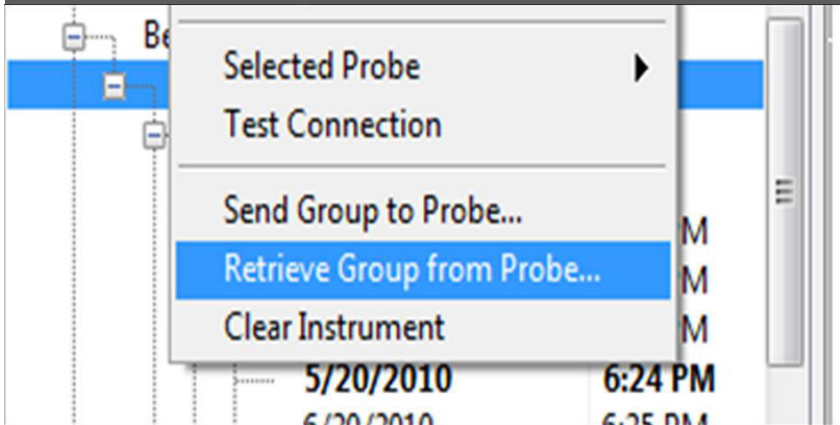


SAFETY: WRIST STRAP WORN ALL TIMES

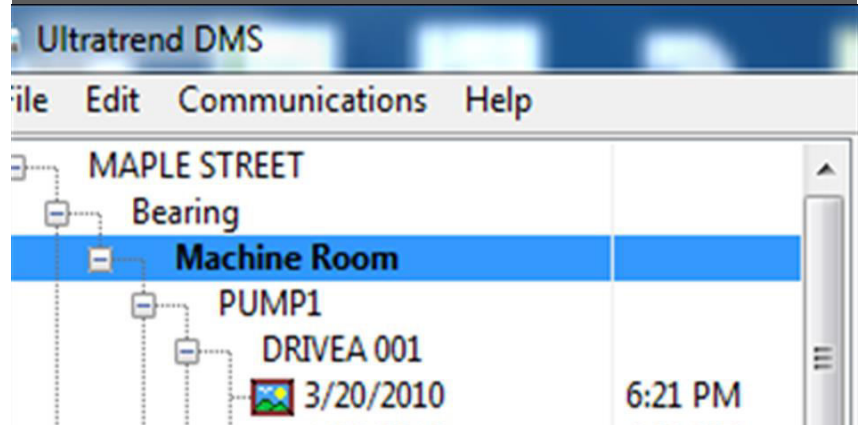
15,000 **DOWNLOADING ROUTE TO PC**



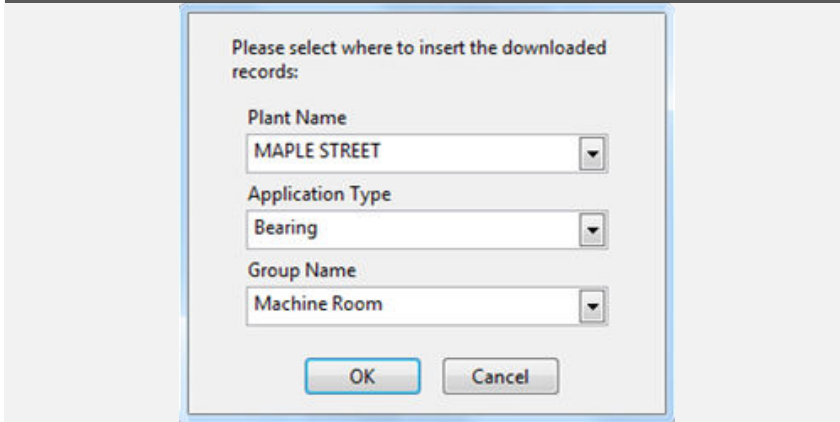
Using the DMS software, select Retrieve Group from Probe, under Communications Tab.



NOTE: Group name must be highlighted.



Once group is downloaded into DMS software, confirm where to download records.



SAFETY: WRIST STRAP WORN ALL TIMES