

# PERFORMING ELECTRICAL SCANS

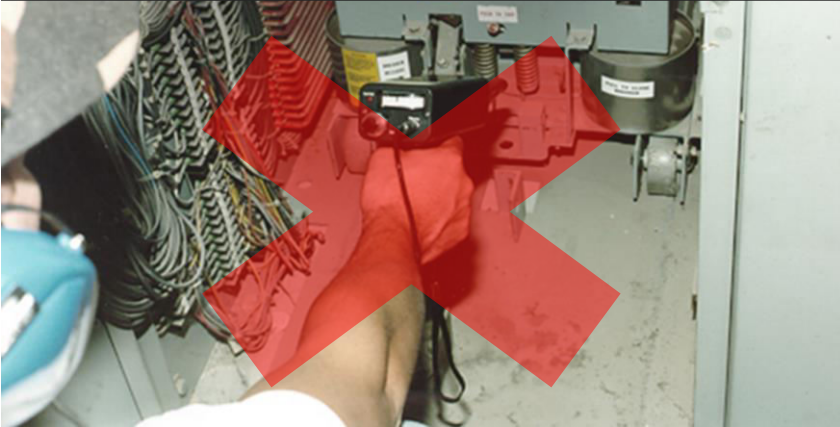
ULTRAPROBE **15,000**



# 15,000 **PERFORMING ELECTRICAL SCANS**



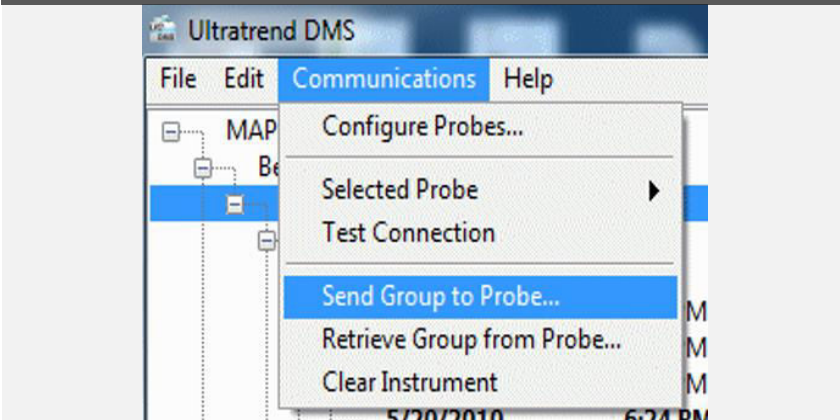
Never insert any part of the Ultraprobe into any openings of electrical apparatus.



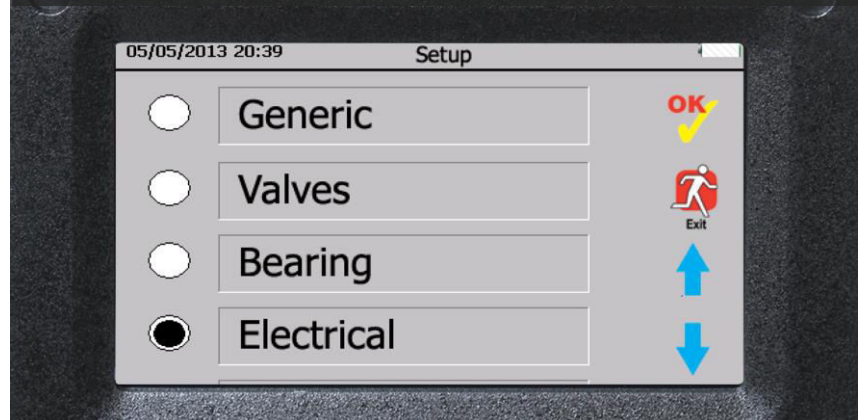
NEEDED: Ultraprobe 15,000; SD Card; Scanning Module; Rubber Focusing Probe; Headphones. Accessory: Long Range Module



Upload Electrical Route from DMS. Refer to **Loading Routes** Instructions.



Select Electrical Application.

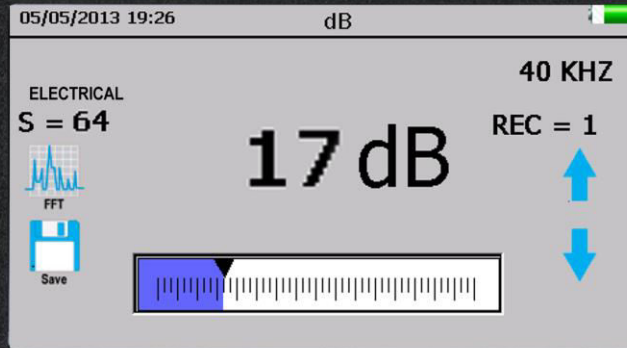


**SAFETY:** WRIST STRAP WORN ALL TIMES

# 15,000 PERFORMING ELECTRICAL SCANS



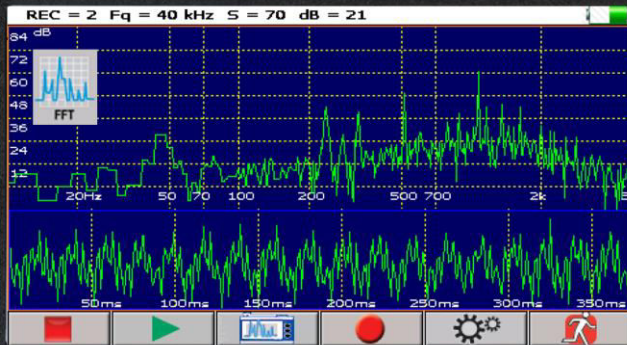
Adjust sensitivity up to begin Gross to Fine scan of electrical equipment.



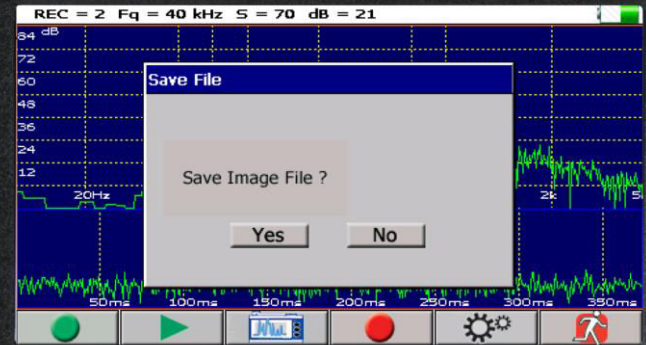
Scan in all directions keeping a safe distance and elbows at sides.



When anomaly is found, open FFT menu to Record. Refer to **Sound Recording** Instructions.

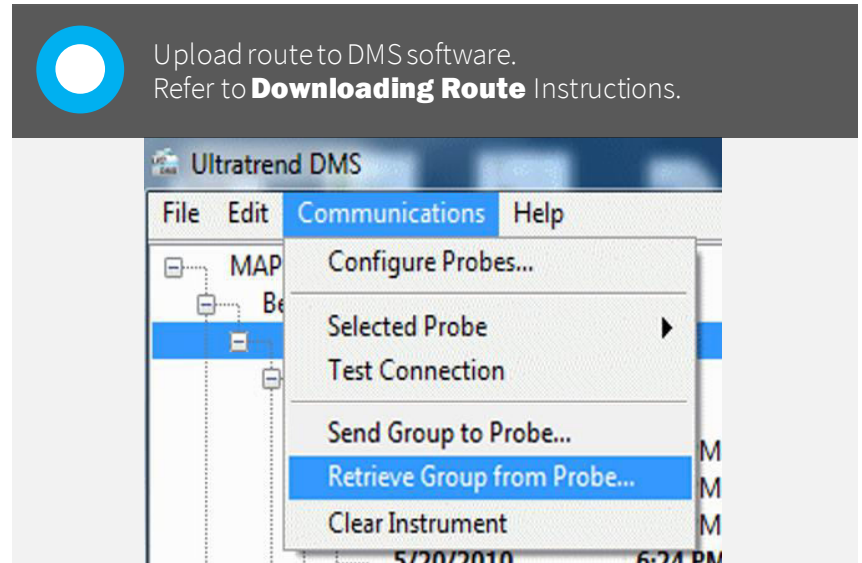
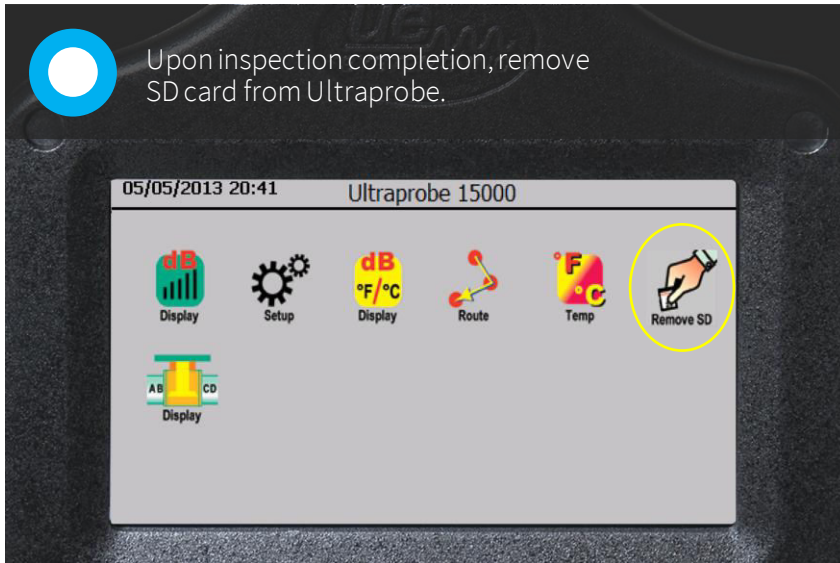


Store Image File for documentation.



**SAFETY:** WRIST STRAP WORN ALL TIMES

# 15,000 PERFORMING ELECTRICAL SCANS



**SAFETY:** WRIST STRAP WORN ALL TIMES