

PERFORMING COMPRESSED GAS LEAK SURVEY

ULTRAPROBE **15,000**

15,000 COMPRESSED GAS LEAK SURVEY



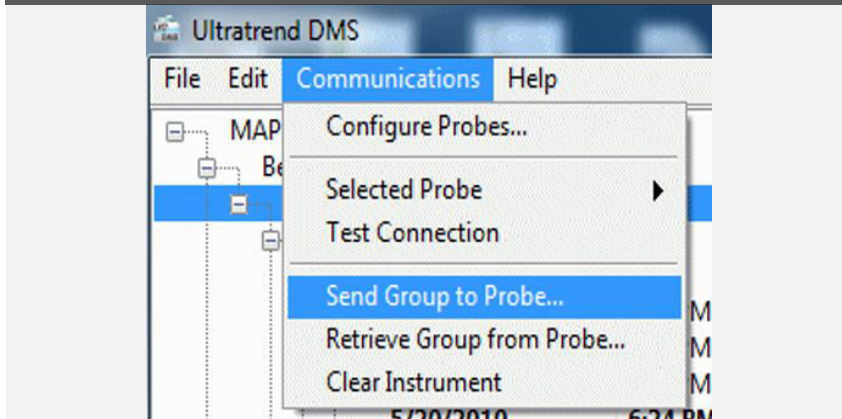
Ultraprobe 15,000; Compact Flash Card;
Scanning Module; Rubber Focusing Probe;
Headphones.



Insert Scanning module (normal distance) or Long
Range Module (Long Distance)



Send Leak from DMS to the SD Card.



Refer to instructions for **Loading
Route to SD Card.**

NOTE

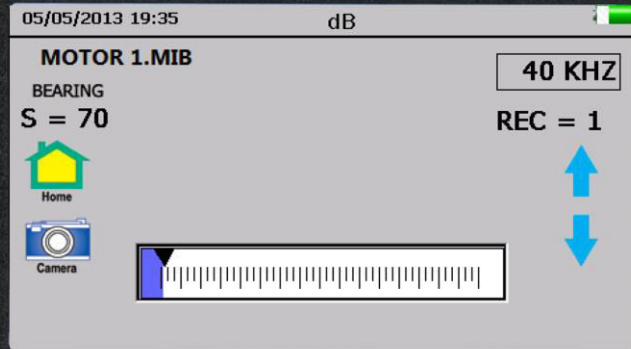
Refer to Visual Instructions
for Loading Routes and
General Setup

SAFETY: WRIST STRAP WORN ALL TIMES

15,000 COMPRESSED GAS LEAK SURVEY



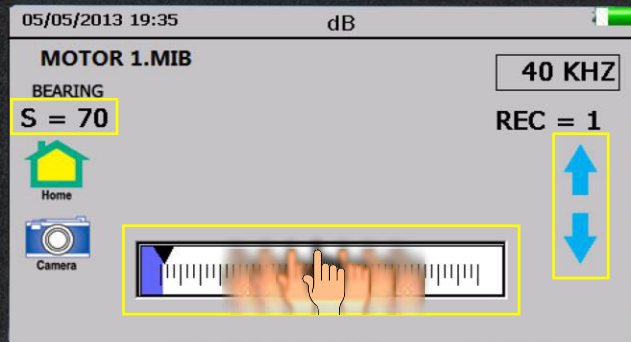
Tune Frequency to 40 kHz and adjust sensitivity.



Perform Leak Survey using Gross to Fine Method.



Adjust Sensitivity while scanning to locate leak.



Pinpoint and Confirm the Leak by Sealing Rubber Focusing Probe on suspected Leak Site.



SAFETY: WRIST STRAP WORN ALL TIMES

15,000 COMPRESSED GAS LEAK SURVEY



Back Away from pinpointed leak 12-15" from the end of the rubber focusing probe.



Refer to Visual Instruction for "Storing a Record".

NOTE

For storing a record
please refer to visual instruction

Storing a Record



Once Record is Confirmed, Back Away; Adjust Sensitivity and search for New Leaks.



NOTE: The Long Range Module can be used for Distance greater than 40 feet.



SAFETY: WRIST STRAP WORN ALL TIMES