

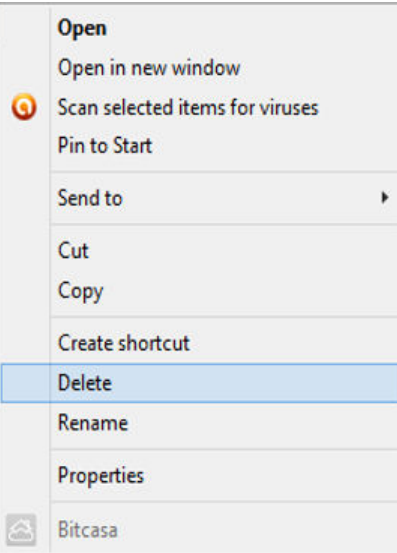
LOADING A ROUTE TO SD CARD

ULTRAPROBE **15,000**

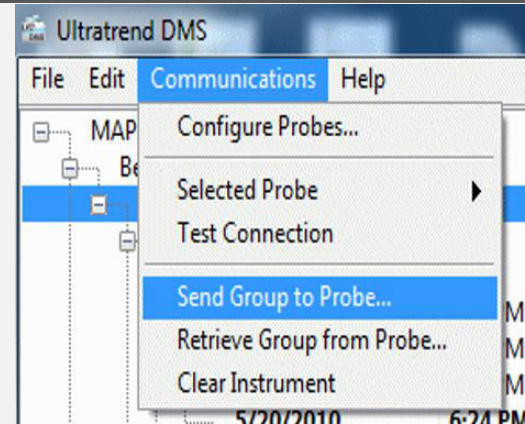
15,000 **LOADING A ROUTE TO SD CARD**



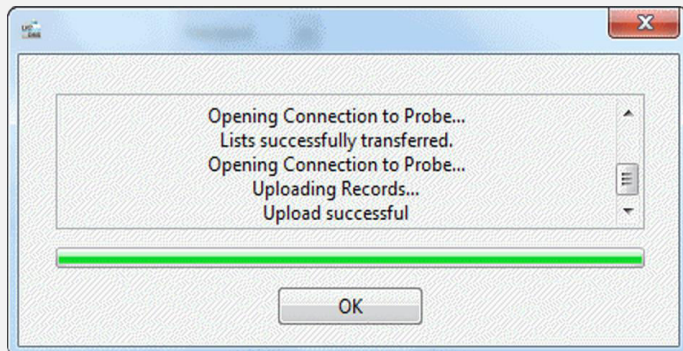
Prior to loading route to SD card, existing data should be cleared from SD card.



Select Group, Communications, Send Group to Probe.



Wait for upload successful message to appear.



Insert SD card into Ultraprobe 15,000, power on, and route is loaded.



SAFETY: WRIST STRAP WORN ALL TIMES