

UPLOADING AND DOWNLOADING ULTRAPROBE 401 “DIGITAL GREASE CADDY”

401 UPLOADING AND DOWNLOADING



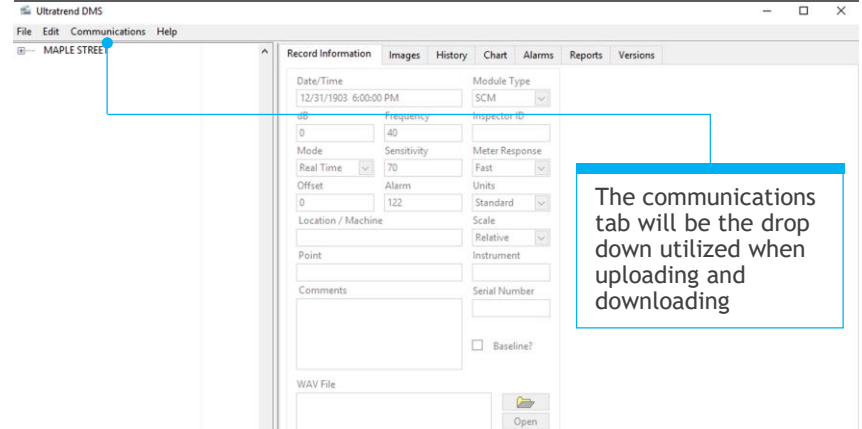
Uploading and Downloading with the UltraProbe 401 is easy. Just insert your SD Card into your computer.



The Ultraprobe 401 comes with an SD Card ready for use.



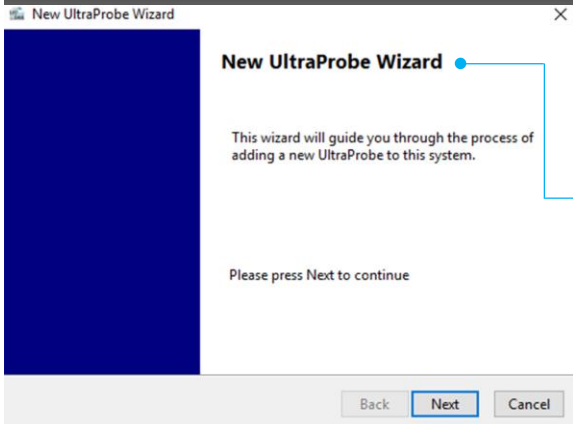
With the SD Card inserted, open the DMS Software. (Free download from www.UESystems.com)



The communications tab will be the drop down utilized when uploading and downloading



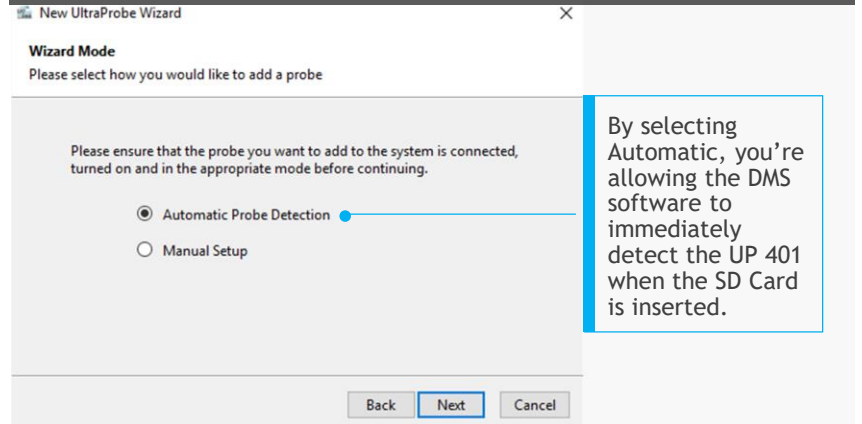
Under the Communications tab, select Configure Probe. The Configuration Wizard will appear.



The New Probe Wizard is a guide outlining steps to configure the UP401



Select Next to move on to the next step. Select Automatic Probe Detection.

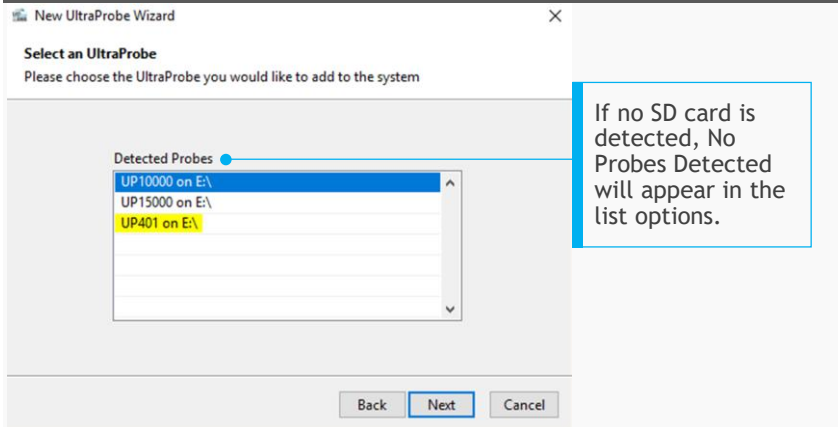


By selecting Automatic, you're allowing the DMS software to immediately detect the UP 401 when the SD Card is inserted.

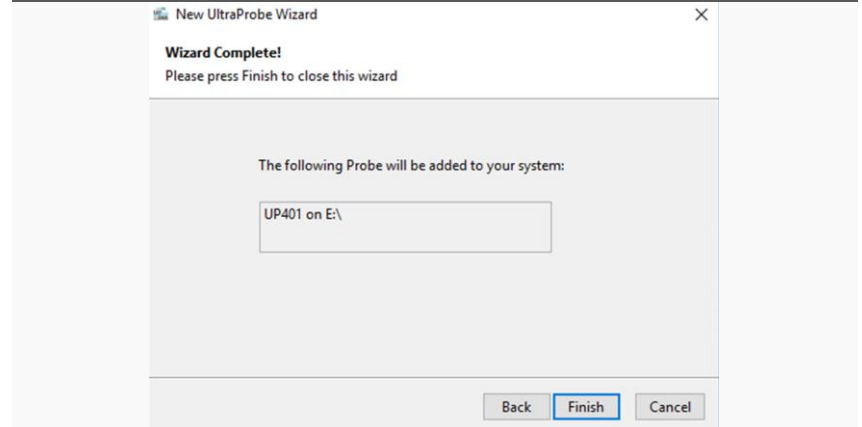
401 UPLOADING AND DOWNLOADING



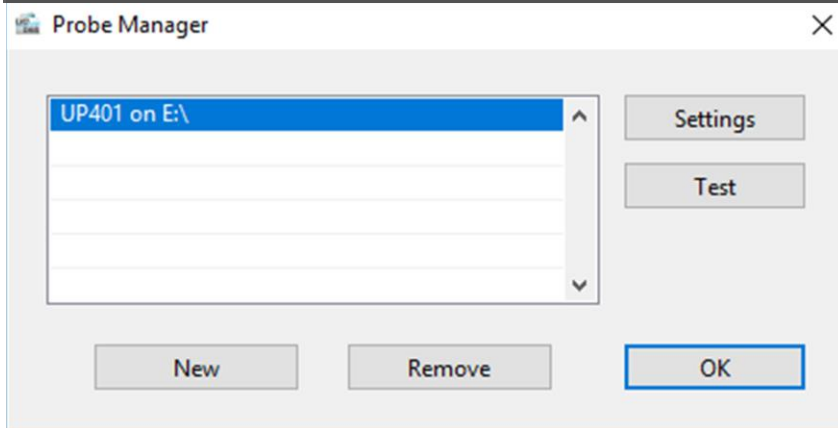
Select the Ultraprobe 401 from the list of detected units. Then click Next.



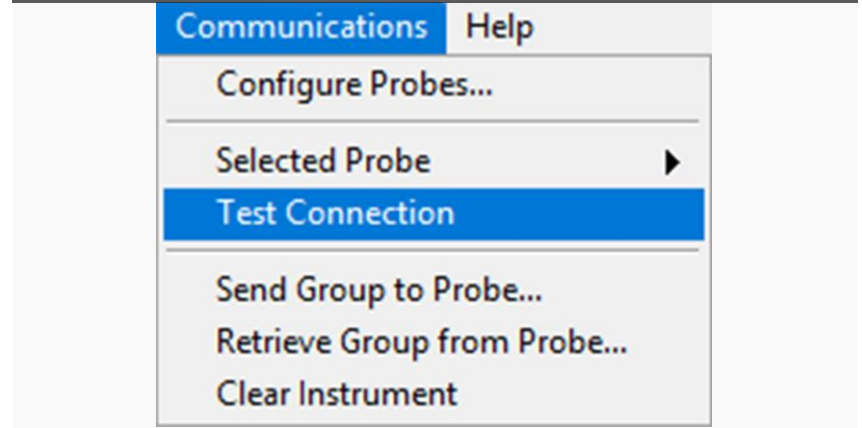
The Ultraprobe 401 will be added to the system. Click Finish to finalize the configuration process.



The Probe Manager prompt will appear with the UP 401 highlighted. Click OK.



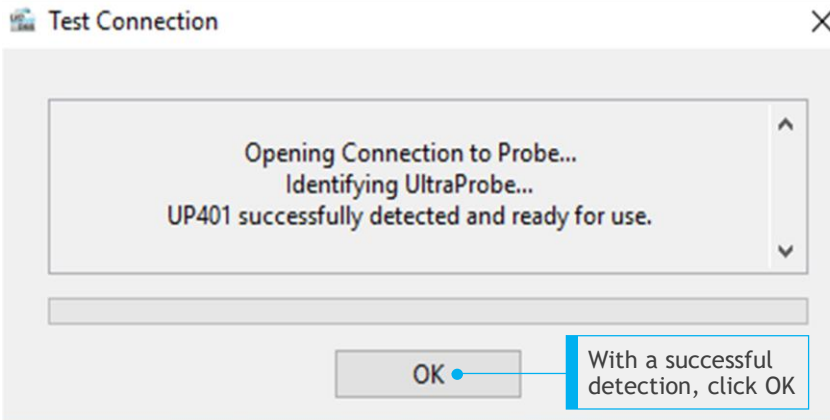
With the Ultraprobe 401 configured, test the connection via the Communications tab.



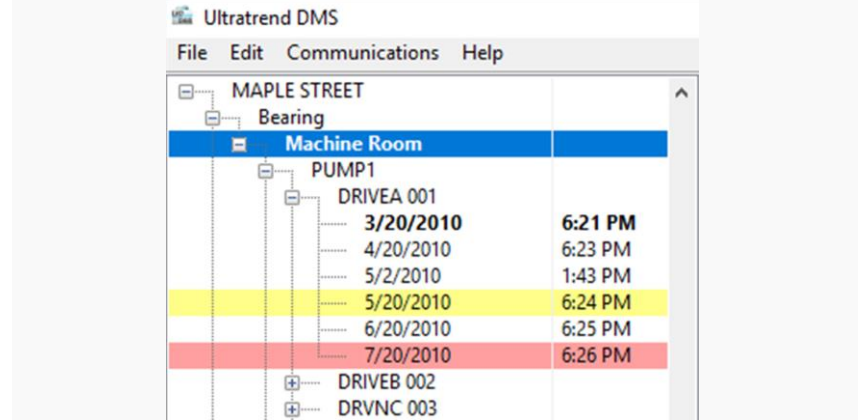
401 UPLOADING AND DOWNLOADING



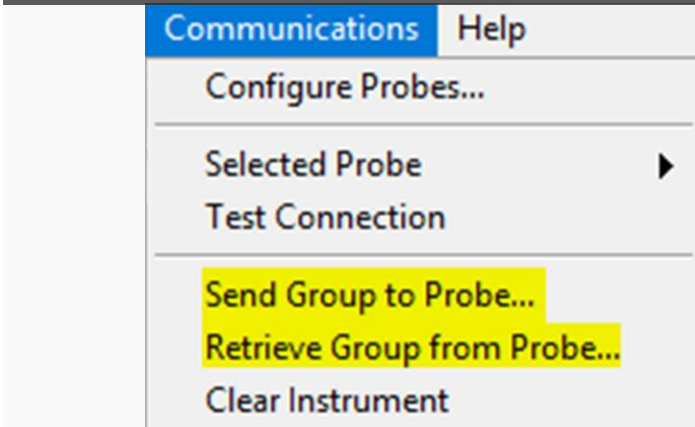
If the connection is established, a prompt will appear indicating the detection is successful.



The Ultraprobe 401 is now ready to upload and download. First, ensure to highlight route(Group).



Under the “Communications” tab, select either “Send Group to Probe” or “Retrieve Group from Probe”



When the upload/download has processed, a prompt will appear confirming the success.

